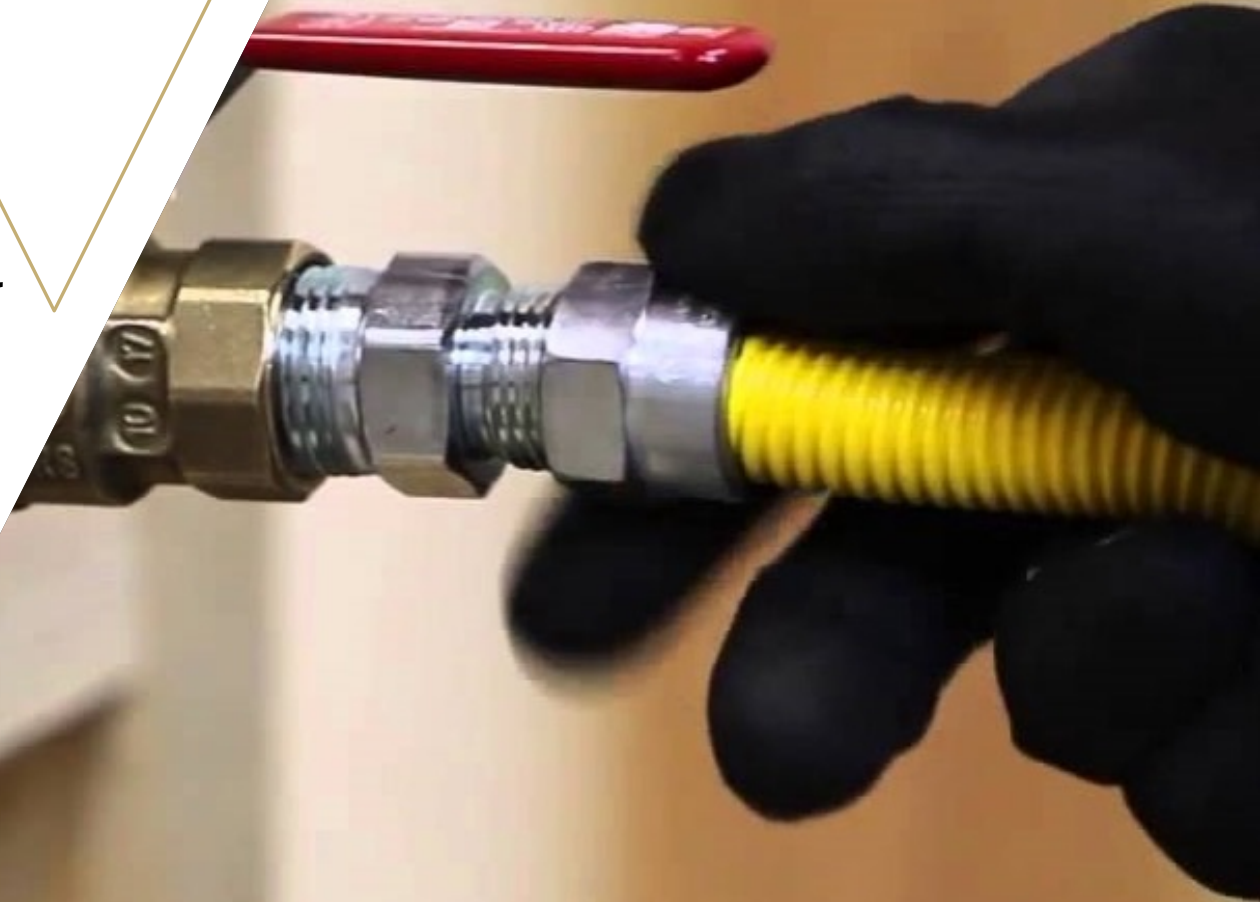




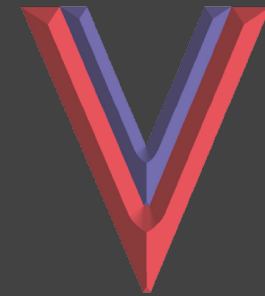
VV Consultancy Services

VV CONSULTANCY SERVICES

"EVERYTHING LPG"



- **About Us**
- **Our Clients**
- **Projects**
- **Contact Details**



VV Consultancy Services



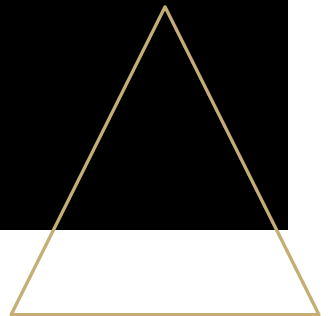
About Us

- Established in 2004
- End-to-end service provider for your LPG pipeline needs.
- Commissioned over 200 pipelining projects across South India



Company's mission

- Reducing the running costs by maximizing efficiency of LPG consumed
- Eliminating frequent maintenance costs.
- Achieving minimal wastage of LPG.
- Providing the most advanced safety features
- Providing innovative LPG pipeline solutions



Market Segments



Industrial

- Metal cutting and heat treatment
- Forging
- Powder Coating
- Galvanizing
- Glass and Ceramics
- Food process
- Metal/Plastic component spray painting

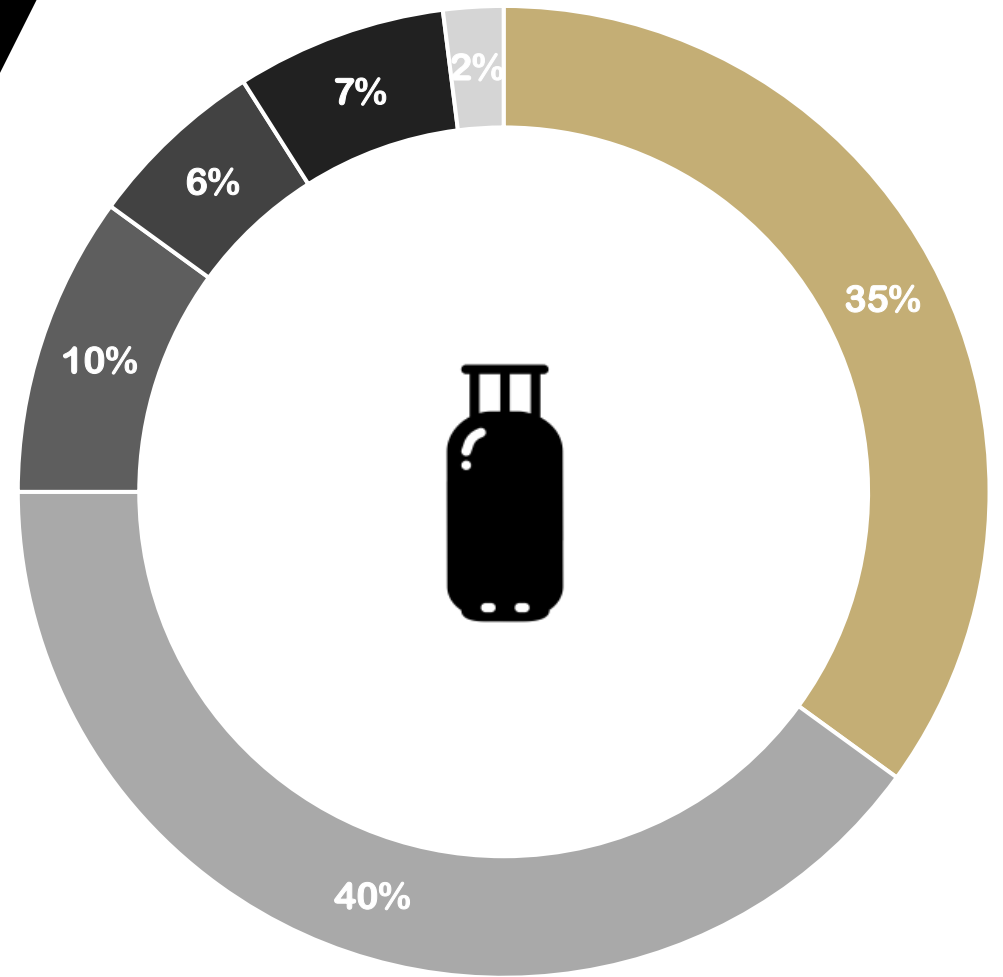
Commercial

- Central kitchen
- Malls-Food courts
- IT parks
- Caterers
- Hotels
 - Fast food Chains
 - Restaurants
 - Star hotels

Domestic

- High Rise Apartments
- Villas

Statistics



- Industries
- Hotel
- IT Parks
- Caterers
- Hospitals
- Printing

Why Us?



21 years of experience



Reliability



Strong technical expertise



In house team of PESO
approved Welders

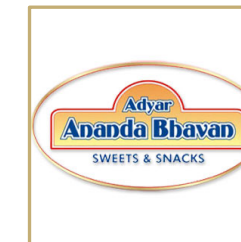


Safety Compliance as per IS
6044



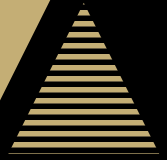

Cost Conscious

Our Clients

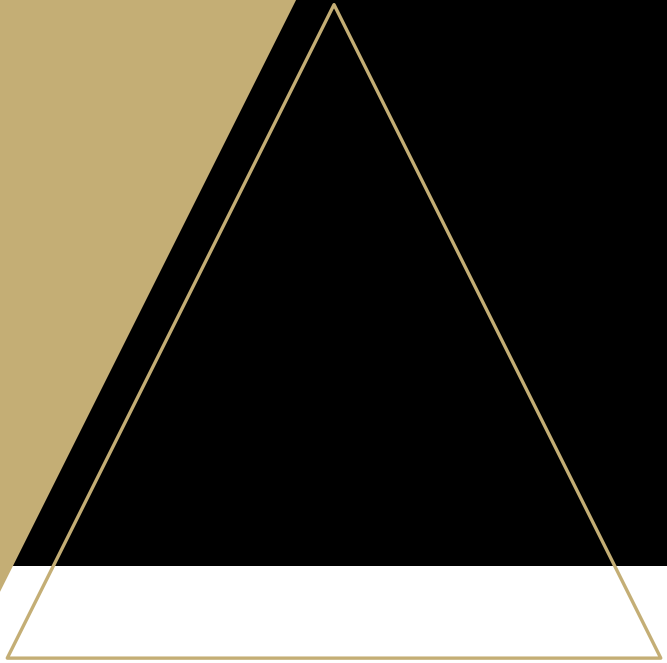


Our Clients

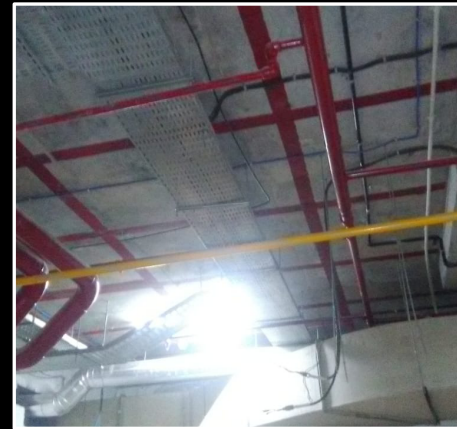




Commercial Projects



TATA Ramanujam IT park



Adyar Ananda Bhavan (Chennai Central Station Branch)





Industrial Segment



Elforge

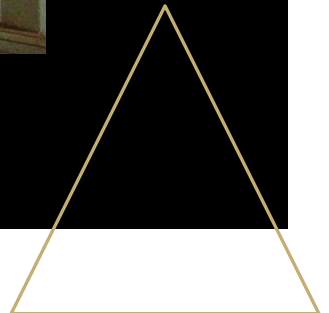
- Metal forging company
- Manufacturers of automotive components for the last 80 years.
- Supplying 15 tonnes of LPG every month.
- Our team has come up with an effective solution by converting an over capacity Bullet Instillation into a LPG manifold, saving space and maintenance cost.

LPG Bullet

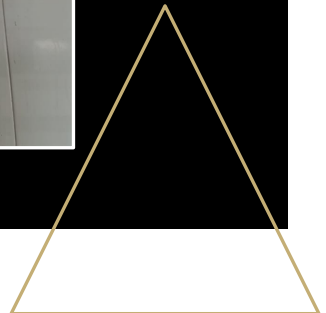
- Area – 10,000 sqft
- Storage capacity – 40 tonnes
- Expensive Maintenance

LOT System

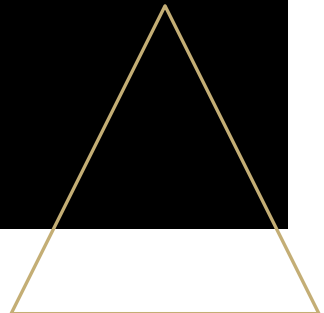
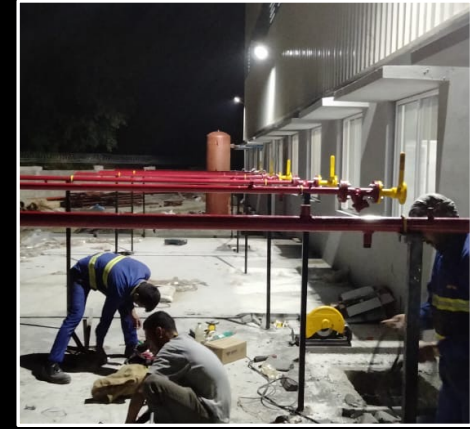
- Area – less than 400 sqft
- Storage capacity – 3 tonnes
- Cost Effective and easy maintenance



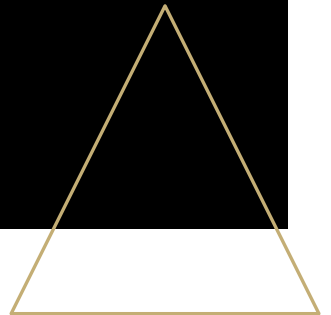
Elforge



Dianex Emissions Pvt Ltd.



Enerlife (Nabati Foods)



Company Profile

| | |
|-----------------------------|---------------------------------------------------------------------------------------------------------------------------------------------------------------------------|
| Company name | VV Consultancy Services |
| Managing Director | D V Asha Ram |
| Business Description | VV Consultancy Services aims at providing turnkey projects to tailor-made according to the needs of every individual client. We emphasize on maximizing efficiency |
| Key Contacts | D V Ram Kumar , Nishesh Guptha D V |
| Contact details | 9790977733, 9791177733 |
| Contact Address | 97/1, South Phase, Industrial Estate, Ambattur Chennai - 600058 |